

HMNZS NGAPONA ASSOCIATION INC

LONGCAST

9 April 21 - Navy Club Lunch – Remuera Club
9 – 11 April 21 – Cooks and Stewards Reunion
16 April 21 - Ngapona Assn Lunch at Henderson RSA
14 May 21 - Navy Club Lunch – Remuera Club
14 – 15 May 21 - OP Grapple Reunion, contact Gerry Wright
gerrywright@xtra.co.nz
16 May 21 - Ngapona Assn Lunch at the Bays Club, Browns Bay
21 May 21 - Ngapona Assn Lunch at Pt Chevalier RSA

FROM THE SICKBAY – ELAINE PAYNE

I am sad to advise that Elaine's health has continued to decline and she was admitted to Waipuna Hospice, Te Puna, last week.
Further info/contact via email: jerry@payne.kiwi.nz or phone: 021 486 013.

WAIHEKE LUNCH

A very successful lunch last Friday at the Waiheke RSA. Numbers were down a bit on previous years but those who attended had an enjoyable day out.



NGAPONA ASSOCIATION – LAPEL PINS

Lapel pins are now available! Contact Dave Thorpe davethorpe@xtra.co.nz

LUNCH AT THE BAYS CLUB

A special lunch is being held on Sunday, 16 May at the Bays Club. This is being held so that those who are unable to attend our Friday lunches can attend. Get a group together and relax at the Bays Club on Sunday afternoon.

NGAPONA ASSN FORMAL DINNER – 24 JULY 2021

The Ngapona Association is holding a formal dinner on Saturday 24 July 2021 at the Birkenhead RSA, Recreation Drive, Birkenhead, Auckland. The guest speaker will be RNZN's Chief of Navy, Rear Admiral David Proctor.

An invitation to attend the function is extended to all NGA Association members, all past and present members of NGAPONA and their partners/spouses. Tickets will be allocated on a first come first served basis. The cost of this function is \$50.00 per head. A cash bar will operate. There will be a buffet type meal of three courses. It is expected that Able Musician Rebecca Nelson will provide a brief performance during the evening. It is also expected that a rum issue will be held.

As this is a formal occasion, appropriate dress with miniatures is expected.

For planning purposes, please advise Expressions of Interest to Mr. Jerry Payne by email 'president@ngapona.org.nz' giving the names of attendees and a contact phone number.

COMMS ASSN - REUNION

The RNZNCA Committee has decided to defer the Reunion planned for 26-28 March 2021 in New Plymouth until April 2022.

The intended venue for the Reunion will remain New Plymouth with the proposed dates of **8-10 April 2022**

BOOK OF THE MONTH

ALL AT SEA: A MEMOIR By: Alan Loynd

ALL AT SEA describes the career of a ship captain and salvage master from the time when he joined his first vessel to his present status as a marine consultant in Hong Kong. He writes of the remarkable changes he has seen and experienced in a career which has spanned more than half a century. By turns amusing and thought-provoking, this is an enjoyable tale of a most interesting life.



ALL AT SEA

A MEMOIR

Alan Loynd

Proverse Hong Kong

LIGHTHOUSE OF THE WEEK – CAPE REINGA

Position: 34 25.60S 172 40.65E

Characteristics: Fl W 12s

Range: 19NM

Structure: White concrete tower

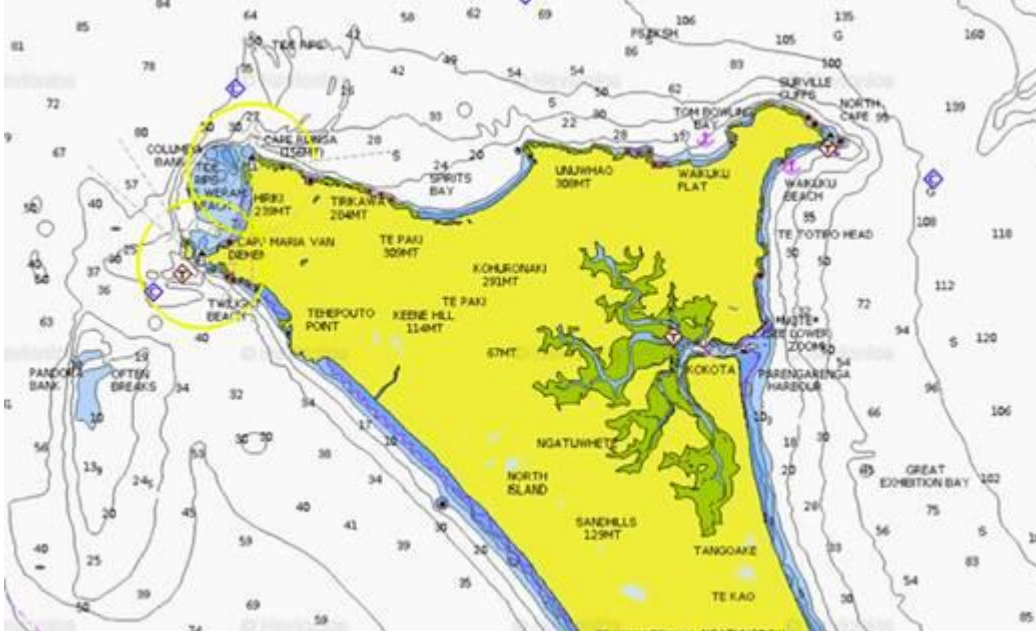
Cape Reinga Lighthouse is owned and operated by Maritime New Zealand. The lighthouse is a common New Zealand icon and a popular tourist destination although the lighthouse itself is not open to the public.

The lighthouse was built in 1941 and first lit during May of that year. It was the last manned light to be built in New Zealand and replaced the Cape Maria van Diemen Lighthouse, located on nearby Motu Opao Island, which had been built in 1879. A lightning strike destroyed much of the equipment soon after its inauguration and the old clockwork kerosene lamp brought from Maria van Diemen went back into service - an inauspicious start.

Accessing that lighthouse was difficult due to the rough seas in the area, so in 1938, it was decided to move the lighthouse to Cape Reinga for safety reasons. The complete lantern fittings from Motu Opao Island were reused at Cape Reinga, though the new lighthouse was fitted with a 1000 watt electrical lamp instead that could be seen for 26 nautical miles (48 km). The lamp was powered by a diesel generator.

In 1987, the lighthouse was fully automated and the lighthouse keepers were withdrawn. The lighthouse is now monitored remotely from Wellington. In May 2000 the original lens and lamp were replaced by a 50 watt beacon. The beacon is powered by batteries that are recharged by solar cells. The beacon flashes every 12 seconds and can be seen for 19 nautical miles (35 km).

Cape Reinga lighthouse children were taught through the Correspondence School in the early 1950s, as the keepers had no private transport. The nearest school at Te Hapua lay some 19 miles away accessed by a long and narrow gravel road over the hills.



Regards

Jerry Payne

Editor

HMNZS Ngapona Assn

021 486 013

(To be removed from this email list please reply to this email with "Unsubscribe" in the subject line.)